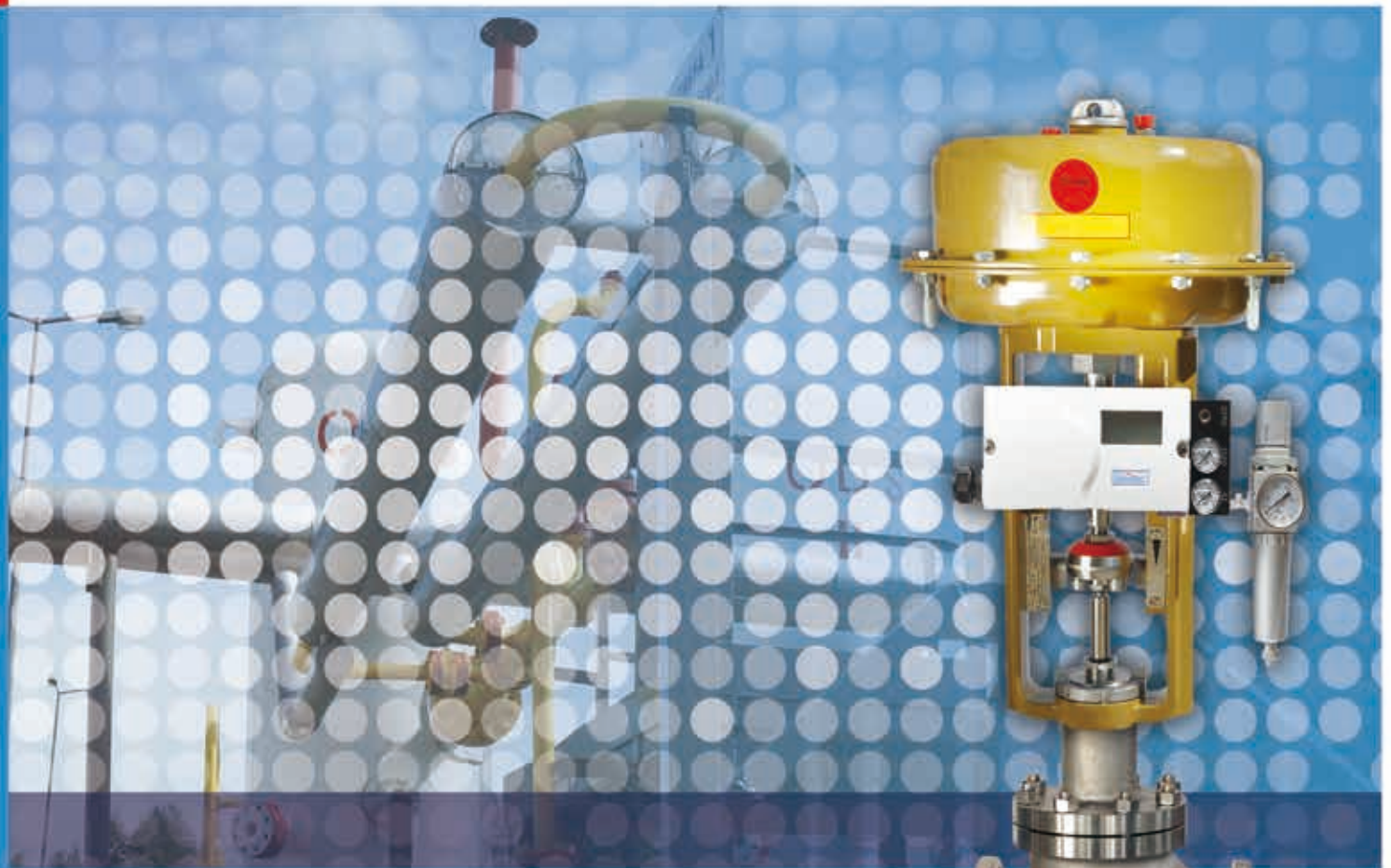


Utmost®

品质与艺术完美结合

艾坦姆流体控制技术（北京）有限公司
Utmost Flow Control Tech.(Beijing) Co.,Ltd



艾坦姆

T220/T260系列三通控制阀

Utmost T220, T260 Series Three-way Control Valve







艾坦姆

T220/T260 系列三通控制阀

Utmost T220, T260 Series Three-way Control Valve

Utmost[®]

T220,T260 三通阀特点

General structures and features of T220 and T260 Series Three-way Valve

工作原理及结构特点 Operation Principle & Structure Characteristic:

三通阀可根据工艺条件的要求，可分为三通分流阀、三通合流阀或开关控制。

Depending on the process requirement the three-way valve can divided into diverting type and mixing type or ON/OFF control.

三通阀在通常情况下可以替代两台单座调节阀或两个直通阀和一个三通接管而得到广泛应用，主要用于液体、气体、蒸汽等介质的配比调节与开关控制，如热交换装置的温控两相比调节。

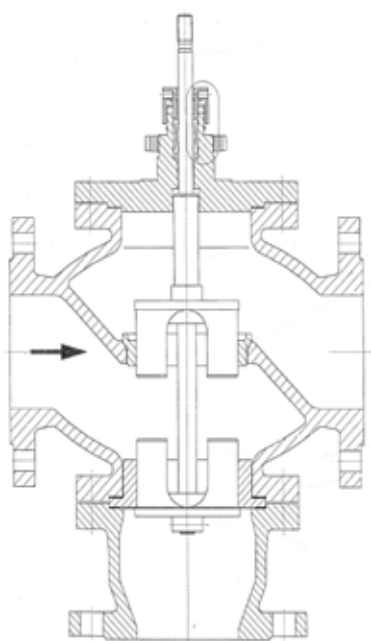
Three-way valve are widely used usually can replace two sets single-seat control valve or two valves with a three-way fitting, mainly for the liquid, gas, steam and other media ratio adjustment or ON/OFF control, such as heat switching device to adjust the thermostat two medium's ratio adjustment.

艾坦姆三通调节阀采用模块化结构设计，阀门结构形式简单、可通过阀内件的更换实现分流或合流，阀芯选用窗口形的结构形式，能够有效缓解介质对阀内件的冲刷。由于窗口形阀内件能够使操作介质无论是在分流还是合流的工况下，反作用于阀芯上，避免了水锤现象的产生，同时减少了阀芯的不平衡力，提高了执行机构和阀门调节的稳定性。

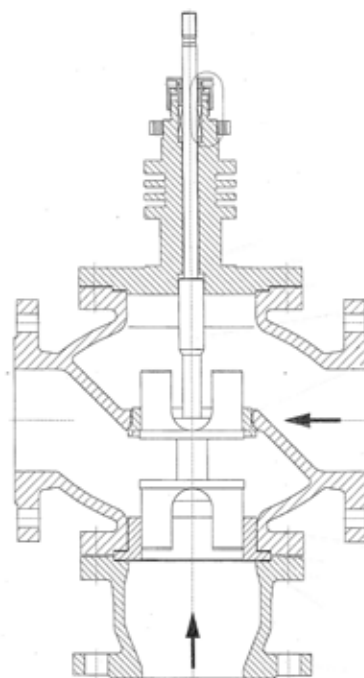
Utmost® three-way valve adopt modular design, simple, compact structure, Diverting or Mixing can be achieved by replacing the trim. Utmost® window-shaped valve trim can effectively reduce the medium washing to valve inner parts. Because of such structure either in diverting or mixing condition, the flow directions are always against the valve trim, which can avoid the water hammer phenomenon, reducing the unbalance force of the valve body improves the stability of the actuator and the valve adjustment.

三通调节阀配用多弹簧执行机构，具有结构简单、重量轻、体积小、拆装方便等优点。

Utmost® Three-way valve is equipped with multi-spring actuator with simple structure, light, small size, and easy disassembly characteristics.



分流型 Sperate Type



合流型 Mix Type

T220, T260 三通阀技术数据 Technical Data Sheet of T220 and T260 Series Three-way Valve

基本规格 General Data

三通阀 Three-Way valve	T220	T260
公称尺寸 Nominal Size DN / NPS	1" ~ 16"	1" ~ 12"
压力等级 Nominal Pressure PN / ANSI	PN16-40 ANSI 150/300	PN63-160 ANSI 600/900
流量特性 Characteristics	线性 Linear	
可调比 Rangeability	50:1	
阀芯导向 Plug guide	阀杆导向 Stem guided, 可选双导向 Option: double guiding (retrofit able)	
泄漏等级 Seat leakage	金属硬密封 IV 级 Metal sealing: IEC 60534-4 leakage class IV ; 金属硬密封 V 级 Metal sealing: IEC 60534-4 leakage class V ;	
波纹管密封 Bellow sealing (option)	无缝双壁波纹管, 标准材质 316SS, 可选材质: 哈氏合金、Monel、Inconel 等其他材料 Seamless, Double Walled, Made of 316SS, Option: Hastelloy, Monel, Inconel and other materials	
保温夹套 Heating jacket (option)	热媒进出口连接方式: 法兰 1/2" 或 1" Connections 1/2" or 1" flanges	
填料 Packing	V 型聚四氟乙烯填料、纯石墨、加强石墨、编织石墨。 V-PTFE Ring, Pure Graphite, Incone reinforced Graphite, PTFE Braided G raphite	
执行机构 Actuator	多弹簧执行机构 Multi-spring actuator	
工作温度 Temperature	-196°C to 530°C	

材质 Materials

阀体材质 Body material	GB 国标	ASTM 标准	DIN 标准	工作温度 Temperatures Range
	ZG280-520	A 216 WCB	1.0619	-29°C to 425°C
	ZG240-450B	A 216 WCC		-50°C to 425°C
		A 352 LCB	1.0566	-46°C to 345°C
	06Cr19Ni10	A351CF8	1.4301	-196°C to 538°C
	06Cr17Ni12Mo2	A 351 CF8M	1.4401	-196°C to 538°C
	022Cr19Ni10	A351CF3	1.4306	-196°C to 425°C
	022Cr17Ni12Mo2	A 351 CF3M	1.4404	-196°C to 455°C
	ZG15Cr1MoG	A 217 WC6	1.7335	最高到 595°C up to 595°C
	ZG12Cr2Mo1G	A 217 WC9	1.7380	最高到 595°C up to 595°C
	其它材质按需提供, Other materials on request			
上阀盖材质 Bonnet material	上阀盖材质与阀体材质相同, Same as valve body			
阀芯材质 Valve trim materials				
序号 Material no.	开槽阀芯 Slotted plug P1	阀座 Seat	阀座密封 Seat seal	工作温度 Temperatures Range
1	316SS	316SS	硬密封 Metal	-196°C to 538°C
2	1.4021-hard	1.4112	硬密封 Metal	最高到 450 °C up to 450 °C
3	1.4112-hard	1.4112	硬密封 Metal	最高到 450 °C up to 450 °C
4	1.4122-nitride	1.4122	硬密封 Metal	最高到 450 °C up to 450 °C
其它材质按需提供, Other materials on request				

T220,T260 三通阀技术数据 Technical Data Sheet of T220 and T260 Series Three-way Valve

三通阀标注 Kv 值 Standard Kvs of Three-way valve

T220

公称通径 Normal Diameter		阀座尺寸 mm Seat Diameter	标准 KV 值 Kv value
25	1"	24	11
40	1-1/2"	37	26
50	2"	48	43
65	2-1/2"	62	68
80	3"	73	100
100	4"	90	150
150	6"	135	380
200	8"	180	650
250	10"	220	900
300	12"	265	1300
350	14"	310	1800
400	16"	400	2500

T260

公称通径 Normal Diameter		阀座尺寸 mm Seat Diameter	标准 KV 值 Kv value
40	1-1/2"	37	26
50	2"	48	43
65	2-1/2"	62	65
80	3"	73	100
100	4"	90	150
150	6"	135	380
200	8"	180	650
250	10"	220	900
300	12"	265	1300

T220, T260 三通阀技术数据 Technical Data Sheet of T220 and T260 Series Three-way Valve

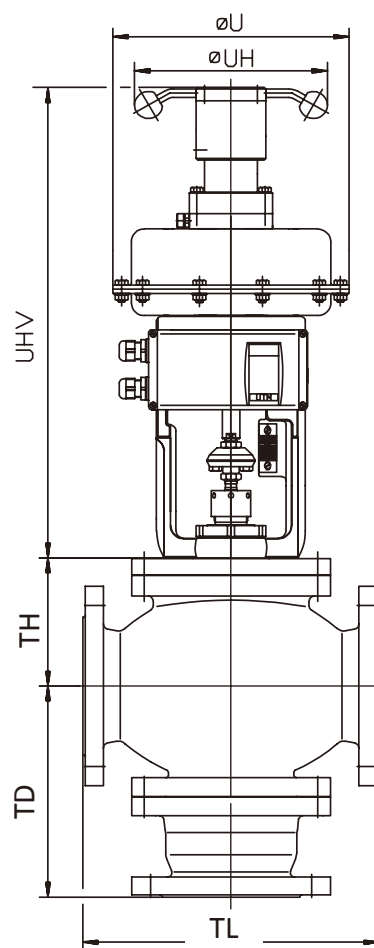
三通阀外形尺寸 Standard Kvs of Series T220

Dimensions of the valves

T220

单位 /Unit:mm

公称通径 Normal Diameter	TL		TD		TH			
	ANSI 150	ANSI 300	ANSI 150	ANSI 300	F1	F2	F3	F4
1"	184	197	92	98	114	170	170	228
1 1/2"	222	235	111	117	105	167	167	233
2"	254	267	127	133	105	167	167	233
3"	298	318	149	159	156	248	248	365
4"	352	368	176	184	181	267	267	389
6"	451	473	225	236	260	355	355	575
8"	543	568	271	289	295	410	410	605
10"	673	708	336	354	360	510	510	850
12"	737	775	368	387	395	545	545	850
14"	889	927	445	463	465	615	615	880
16"	1016	1057	508	529	520	670	670	960



T260

单位 /Unit:mm

公称通径 Normal Diameter	TL	TD	TH			
	ANSI 600	ANSI 600	F1	F2	F3	F4
1"	216	108	135	170	170	* 按需提供 On request
1 1/2"	241	121	160	240	240	
2"	292	146	190	270	270	
3"	356	178	250	315	315	
4"	432	216	275	355	355	
6"	559	279	335	490	490	
8"	660	330	410	480	480	
10"	787	394	*	*	*	
12"	838	419	*	*	*	

*: 如需了解更多数据, 请与艾坦姆公司联系。 For more other specifications request please contact with Utmost.

- F1- 标准上阀盖
Top flange standard
- F2- 双填料型上阀盖
Top flange with double stuffing box
- F3- 带散热片的上阀盖
Top flange with cooling fins
- F4- 带波纹管密封的上阀盖
Top flange with bellows sealing



品质与艺术完美结合

不仅仅是性能卓越的产品.....
艾坦姆还通过技术方案和综合的售后服务体系,
增强产品价值,为您的工厂提供全面支持!

More than just excellent products!
Utmost also supply technical solution and integrated after service
system to increase products value and fully support your factory!

声明:本样本所记载的数值为标准阀门理论值及测量值,数值规格
更新恕不另行通知。
Announcement: The data of this brochure comes from standard valve in
theory and measurement, data updates without notice.

艾坦姆流体控制技术(北京)有限公司 Utmost Flow Control Tech.(Beijing) Co.,Ltd

地址:北京市顺义区仁和开发区临河前街29号 邮编:101300
Add: No.29 of Renhe Qianjie, Renhe Industrial Park, Shunyi district, Beijing: 101300
电话/Tel: 010-80490446/ 80490441
传真/Fax: 010-61406990/6992
邮箱/Mail: sales@utmost-valve.com
网站/Web: www.utmost-valve.com

山东快速反应中心

Quick Response Center of Shandong
地址:山东省枣庄市滕州市腾飞东路1266号 邮编:277500
Add: No.1266 of Tengfei Road, Zaozhuang City, Tengzhou City, Shandong Province
电话/Tel: 0632-5656159
传真/Fax: 0632-5656159

大连快速反应中心

Quick Response Center of Dalian
地址:大连经济开发区红星海世界A区11号楼3公建
Add: No. 3 of 11 building Shijieguan of the Red Star A area, Economic Development Zone, Dalian
电话/Tel: 0411-87550166
传真/Fax: 0411-88175365